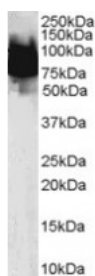




KLF4 Antibody

CATALOG NUMBER: 45-806



Western Blot (0.1ug/ml) staining of Human Duodenum lysate (35ug protein in RIPA buffer). Primary incubation was 1 hour. Detected by chemiluminescence.

Specifications

SPECIES REACTIVITY:	Human
TESTED APPLICATIONS:	ELISA, WB
APPLICATIONS:	ELISA: antibody detection limit dilution 1:64000. Western Blot: Experiments gave strong bands at 75-90kDa and a faint 50-kDa band in Human Duodenal lysate after 0.1ug/ml antibody staining. These bands correspond to earlier findings in literature (Piccinni et al, J. Biol. Chem., Vol. 279 (10), 9103-9114)
POSITIVE CONTROL:	1) Cat. No. 1364 - Human Duodenum Tissue Lysate
IMMUNOGEN:	KLF4 antibody was raised against a 12 amino acid synthetic peptide near the N-Terminus of KLF4.
HOST SPECIES:	Goat

Properties

PURIFICATION:	KLF4 antibody was purified from goat serum by ammonium sulphate precipitation followed by antigen affinity chromatography using the immunizing peptide.
PHYSICAL STATE:	Liquid
BUFFER:	KLF4 antibody is supplied in Tris saline, 0.02% sodium azide, pH 7.3 with 0.5% bovine serum albumin.
CONCENTRATION:	500 ug/mL
STORAGE CONDITIONS:	Aliquot and store at -20°C. Minimize freezing and thawing.
CLONALITY:	Polyclonal
CONJUGATE:	Unconjugated

Additional Info

ALTERNATE NAMES:	KLF4, Kruppel-like factor 4 (gut), EZF, GKLF, endothelial Kruppel-like zinc finger protein
ACCESSION NO.:	NP_004226
PROTEIN GI NO.:	194248077
OFFICIAL SYMBOL:	KLF4
GENE ID:	9314

Background

REFERENCES: 1) Shields JM, Christy RJ, Yang VW. Identification and characterization of a gene encoding a gut-enriched Kruppel-like factor expressed during growth arrest. J Biol Chem. 1996 Aug 16;271(33):20009-17.

FOR RESEARCH USE ONLY

December 13, 2016