

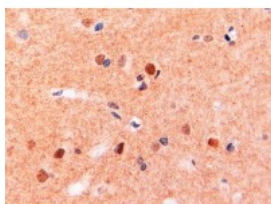


ITGAM Antibody

CATALOG NUMBER: 45-783



Western Blot (0.3ug/ml) staining of Human Brain (CerWestern Blot) lysate (35ug protein in RIPA buffer). Primary incubation was 1 hour. Detected by chemiluminescence.



Immunohistochemistry (2ug/ml) staining of paraffin embedded Human Brain. Steamed antigen retrieval with Tris/EDTA buffer pH 9, HRP-staining.

Specifications

SPECIES REACTIVITY:	Human
TESTED APPLICATIONS:	ELISA, IHC-P, WB
APPLICATIONS:	ELISA: antibody detection limit dilution 1:32000. Western Blot: Approx 170kDa band observed in Human Brain (Cerebellum) lysates (calculated MW of 127kDa according to NP_000623.2). The observed molecular weight corresponds to earlier findings with different antibodies from other sources. Recommended con Immunohistochemistry: In paraffin embedded Human Brain shows staining of microglia. Recommended concentration, 2-4ug/ml.
POSITIVE CONTROL:	1) Cat. No. 1362 - Human Cerebellum, Left Lysate Cat. No. 1363 - Human Cerebellum, Right Lysate
SPECIFICITY:	The immunizing peptide represents part of the extra-cellular domain.
IMMUNOGEN:	ITGAM antibody was raised against an 11 amino acid synthetic peptide near the internal region of ITGAM.
HOST SPECIES:	Goat

Properties

PURIFICATION:	ITGAM antibody was purified from goat serum by ammonium sulphate precipitation followed by antigen affinity chromatography using the immunizing peptide.
PHYSICAL STATE:	Liquid
BUFFER:	ITGAM antibody is supplied in Tris saline, 0.02% sodium azide, pH 7.3 with 0.5% bovine serum albumin.
CONCENTRATION:	500 ug/mL
STORAGE CONDITIONS:	Aliquot and store at -20°C. Minimize freezing and thawing.
CLONALITY:	Polyclonal
CONJUGATE:	Unconjugated

Additional Info

ALTERNATE NAMES:	ITGAM, integrin, alpha M (complement component 3 receptor 3 subunit), CD11B, CR3A, MAC-1, MAC1A,
-------------------------	--

MGC117044, MO1A, Integrin, alpha-M (complement component receptor-3, alpha), antigen CD11B (p170), macrophage antigen, alpha polypeptide, antigen CD11b (p170), complement component receptor 3, alpha, integrin alpha M, alpha M (complement component receptor 3, CD11b (p170), macrophage antigen alpha polypeptide, neutrophil adherence receptor alpha-M subunit

ACCESSION NO.: NP_000623.2

PROTEIN GI NO.: 88501734

OFFICIAL SYMBOL: ITGAM

GENE ID: 3684

Background

REFERENCES: 1) Zhou R, He PL, Ren YX, Wang WH, Zhou RY, Wan H, Ono S, Fujiwara H, Zuo JP. Myeloid suppressor cell-associated immune dysfunction in CSA1M fibrosarcoma tumor-bearing mice. *Cancer Sci.* 2007 Apr 13;

FOR RESEARCH USE ONLY

December 13, 2016