

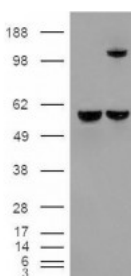


Insulysin Antibody

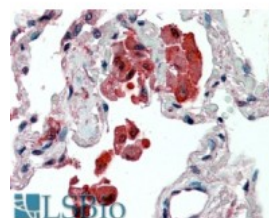
CATALOG NUMBER: 45-776



Western Blot (0.1ug/ml) staining of K562 cell lysate (35ug protein in RIPA buffer). Primary incubation was 1 hour. Detected by chemiluminescence.



HEK293 overexpressing Insulysin and probed with antibody (mock transfection in first lane).



Immunohistochemistry (2.5ug/ml) staining of paraffin embedded Human Lung. Steamed antigen retrieval with citrate buffer pH 6, AP-staining.

Specifications

SPECIES REACTIVITY:	Human
TESTED APPLICATIONS:	ELISA, IHC-P, WB
APPLICATIONS:	ELISA: antibody detection limit dilution 1:32000. Western Blot: Approx 110-120kDa band observed in lysates of cell line K562 (calculated MW of 118kDa according to NP_004960.1). In transfected HEK293 transiently expressing Insulysin a band of approx. 110kDa is observed. This band is not observed in the n Immunohistochemistry: In paraffin embedded Human Lung shows cytoplasm staining of alveolar macrophages. Recommended concentration, 3-6ug/ml.
POSITIVE CONTROL:	1) Cat. No. 1204 - K562 Cell Lysate
SPECIFICITY:	This antibody is expected to recognize both reported isoforms (NP_004960.1 and NP_001159418.1).
IMMUNOGEN:	Insulysin antibody was raised against an 11 amino acid synthetic peptide near the internal region of Insulysin.
HOST SPECIES:	Goat

Properties

PURIFICATION:	Insulysin antibody was purified from goat serum by ammonium sulphate precipitation followed by antigen affinity chromatography using the immunizing peptide.
PHYSICAL STATE:	Liquid
BUFFER:	Insulysin antibody is supplied in Tris saline, 0.02% sodium azide, pH 7.3 with 0.5% bovine serum albumin.
CONCENTRATION:	500 ug/mL
STORAGE CONDITIONS:	Aliquot and store at -20°C. Minimize freezing and thawing.
CLONALITY:	Polyclonal
CONJUGATE:	Unconjugated

Additional Info

ALTERNATE NAMES:	insulin-degrading enzyme, FLJ35968, INSULYSIN, insulinase, insulysin
ACCESSION NO.:	NP_004960.1
PROTEIN GI NO.:	4826770

OFFICIAL SYMBOL:	IDE
GENE ID:	3416

Background

REFERENCES: 1) Zhao Z, Xiang Z, Haroutunian V, Buxbaum JD, Stetka B, Pasinetti GM. Insulin degrading enzyme activity selectively decreases in the hippocampal formation of cases at high risk to develop Alzheimer's disease. Neurobiol Aging. 2007 Jun;28(6):824-30. Epub 2006 Jun 12.

FOR RESEARCH USE ONLY

December 13, 2016