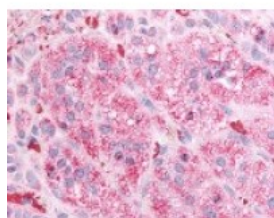




GPR84 Antibody

CATALOG NUMBER: 48-221



Immunohistochemistry staining of GPR84
in adrenal tissue using GPR84 Antibody.

Specifications

SPECIES REACTIVITY:	Gibbon, Gorilla, Human
TESTED APPLICATIONS:	ELISA, IHC
APPLICATIONS:	GPR84 antibody can be used in ELISA, and immunohistochemistry starting at 20 ug/mL.
USER NOTE:	Optimal dilutions for each application to be determined by the researcher.
SPECIFICITY:	BLAST analysis of the peptide immunogen showed no homology with other human proteins.
IMMUNOGEN:	GPR84 antibody was raised against a peptide located in the 3rd cytoplasmic domain of GPR84 (Human).
HOST SPECIES:	Rabbit

Properties

PURIFICATION:	Immunoaffinity Chromatography
PHYSICAL STATE:	Liquid
BUFFER:	PBS, 0.1% sodium azide.
STORAGE CONDITIONS:	GPR84 antibody should be stored long term (months) at -80 °C and short term (days) at 4 °C. As with all antibodies avoid freeze/thaw cycles.
CLONALITY:	Polyclonal
CONJUGATE:	Unconjugated

Additional Info

ALTERNATE NAMES:	GPR84, EX33, GPCR4, G-protein coupled receptor 84, G protein-coupled receptor 84
ACCESSION NO.:	Q9NQS5
PROTEIN GI NO.:	66774035
OFFICIAL SYMBOL:	GPR84
GENE ID:	53831

Background

BACKGROUND:	G protein-coupled receptor EX33 is an Orphan-A GPCR with an unknown ligand.
--------------------	---

