

Name: Rabbit polyclonal anti-CPT1B antibody
Product Data Sheet - ANTIBODY**Catalog: TA313683**

Components:	• Rabbit polyclonal anti-CPT1B antibody (TA313683)
Amount:	100ul
Immunogen:	The antiserum was produced against synthesized peptide derived from internal of human CPT1B.
Host:	Rabbit
Isotype:	IgG
Species Reactivity:	Human
Guaranteed Applications:	WB, IHC
Suggested Dilutions:	WB: 1:500~1:3000, IHC: 1:50~1:100, ELISA: 1:40000
Concentration:	1mg/ml
Buffer:	Phosphate buffered saline (without Mg ²⁺ and Ca ²⁺), pH 7.4, 150mM NaCl, 0.02% sodium azide and 50% glycerol.
Purification:	The antibody was affinity-purified from rabbit antiserum by affinity-chromatography using epitope-specific immunogen.
Storage Condition:	Shipped at -20C. Upon delivery store at -20C. Dilute in PBS (pH7.3) if necessary. Stable for 12 months from date of receipt. Avoid repeated freeze-thaws.

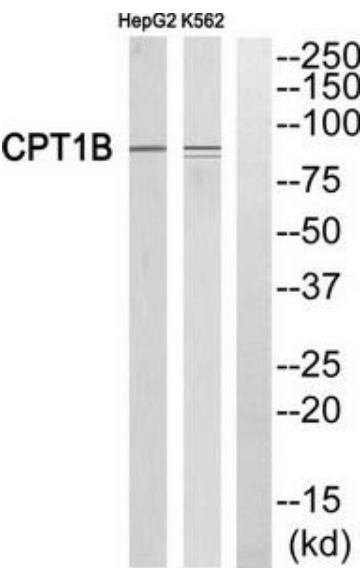
Target

Target Name:	Homo sapiens carnitine palmitoyltransferase 1B (muscle) (CPT1B), transcript variant 5
Alternative Name:	CPT1-M; CPT1M; CPTI; CPTI-M; M-CPT1; MCCPT1; MCPT1
Database Link:	NP_001138606
Function:	

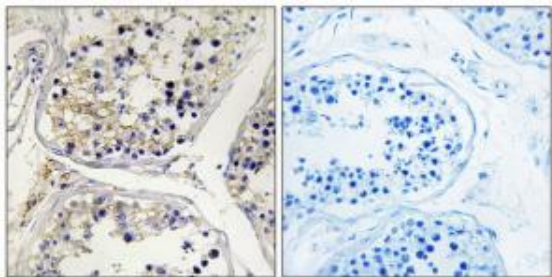
This product is to be used for laboratory only. Not for diagnostic or therapeutic use.

© 2014 OriGene Technologies, Inc. 9620 Medical Center Dr., Suite 200, Rockville, MD 20850

Validation Data



Western blot analysis of extracts from HepG2 cells and K562 cells, using CPT1B antibody. The lane on the right is treated with the synthesized peptide.



Immunohistochemistry analysis of paraffin-embedded human testis tissue, using CPT1B antibody. The picture on the right is treated with the synthesized peptide.

* More validation images may be available on our website: <http://www.origene.com/antibody/TA313683.aspx>