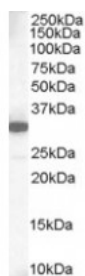




## MCL1 Antibody

CATALOG NUMBER: 45-872



Western Blot staining (1ug/ml) of Human Lung lysate (RIPA buffer, 35ug total protein per lane). Primary incubated for 1 hour. Detected by western blot using chemiluminescence.

### Specifications

<b>SPECIES REACTIVITY:</b>	Human, Mouse, Rat
<b>TESTED APPLICATIONS:</b>	ELISA, WB
<b>APPLICATIONS:</b>	ELISA: antibody detection limit dilution 1:2000. Western Blot: Approx 35kDa band observed in lysates of Human Lung, in Mouse and Rat Thymus, and in cell line K562 (calculated MW of 37.3kDa according to NP_068779.1). Recommended concentration: 1-3ug/ml.
<b>POSITIVE CONTROL:</b>	1) Cat. No. 1302 - Human Lung Tissue Lysate 2) Cat. No. 1409 - Mouse Thymus Tissue Lysate 3) Cat. No. 1471 - Rat Thymus Tissue Lysate
<b>SPECIFICITY:</b>	This antibody is expected to recognise reported isoform 1 (NP_068779.1) and isoform 3 (NP_001184249.1).
<b>IMMUNOGEN:</b>	MCL1 antibody was raised against a 12 amino acid synthetic peptide near the C-Terminus of MCL1.
<b>HOST SPECIES:</b>	Goat

### Properties

<b>PURIFICATION:</b>	MCL1 antibody was purified from goat serum by ammonium sulphate precipitation followed by antigen affinity chromatography using the immunizing peptide.
<b>PHYSICAL STATE:</b>	Liquid
<b>BUFFER:</b>	MCL1 antibody is supplied in Tris saline, 0.02% sodium azide, pH 7.3 with 0.5% bovine serum albumin.
<b>CONCENTRATION:</b>	500 ug/mL
<b>STORAGE CONDITIONS:</b>	Aliquot and store at -20°C. Minimize freezing and thawing.
<b>CLONALITY:</b>	Polyclonal
<b>CONJUGATE:</b>	Unconjugated

### Additional Info

<b>ALTERNATE NAMES:</b>	MCL1, TM, EAT, MCL1L, MCL1S, MGC1839, MGC104264, myeloid cell leukemia sequence 1 (BCL2-related), induced myeloid leukemia cell differentiation protein Mcl-1, myeloid cell leukemia sequence 1, isoform 1, BCL2L3
-------------------------	--

<b>ACCESSION NO.:</b>	NP_068779.1
<b>PROTEIN GI NO.:</b>	11386165
<b>OFFICIAL SYMBOL:</b>	MCL1
<b>GENE ID:</b>	4170

#### Background

**REFERENCES:** 1) Opferman JT, Letai A, Beard C, Sorcinelli MD, Ong CC, Korsmeyer SJ. Development and maintenance of B and T lymphocytes requires antiapoptotic MCL-1. Nature. 2003 Dec 11;426(6967):671-6.

**FOR RESEARCH USE ONLY**

December 13, 2016