

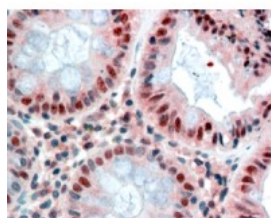


## MBD2 Antibody

CATALOG NUMBER: 45-868



Western Blot (0.3ug/ml) staining of Jurkat cell lysate (35ug protein in RIPA buffer). Primary incubation was 1 hour. Detected by chemiluminescence.



Immunohistochemistry (2.5ug/ml) staining of paraffin embedded Human Colon. Steamed antigen retrieval with citrate buffer pH 6, AP-staining.

### Specifications

|                             |   |
|-----------------------------|---|
| <b>SPECIES REACTIVITY:</b>  | Human   |
| <b>TESTED APPLICATIONS:</b> | ELISA, IHC-P, WB  |
| <b>APPLICATIONS:</b>        | ELISA: antibody detection limit dilution 1:64000. Western Blot: Approx 48-50kDa band observed in lysates of cell line Jurkat (calculated MW of 43.3kDa according to NP_003918.1). The observed molecular weight corresponds to earlier findings in literature with different antibodies (Tan et al, Mol Cell Bio Immunohistochemistry: In paraffin embedded Human Colon shows nuclear staining of enterocytes. Recommended concentration, 2-4ug/ml. |
| <b>POSITIVE CONTROL:</b>    | 1) Cat. No. 1205 - Jurkat Cell Lysate   |
| <b>SPECIFICITY:</b>         | This antibody is expected to recognize isoform 1 (NP_003918.1) only.  |
| <b>IMMUNOGEN:</b>           | MBD2 antibody was raised against a 15 amino acid synthetic peptide near the internal region of MBD2.  |
| <b>HOST SPECIES:</b>        | Goat  |

### Properties

|                            |   |
|----------------------------|---|
| <b>PURIFICATION:</b>       | MBD2 antibody was purified from goat serum by ammonium sulphate precipitation followed by antigen affinity chromatography using the immunizing peptide. |
| <b>PHYSICAL STATE:</b>     | Liquid  |
| <b>BUFFER:</b>             | MBD2 antibody is supplied in Tris saline, 0.02% sodium azide, pH 7.3 with 0.5% bovine serum albumin.  |
| <b>CONCENTRATION:</b>      | 500 ug/mL   |
| <b>STORAGE CONDITIONS:</b> | Aliquot and store at -20°C. Minimize freezing and thawing.  |
| <b>CLONALITY:</b>          | Polyclonal  |
| <b>CONJUGATE:</b>          | Unconjugated  |

### Additional Info

|                         |  |
|-------------------------|--|
| <b>ALTERNATE NAMES:</b> | MBD2, methyl-CpG binding domain protein 2, DKFZp586O0821, DMTase, NY-CO-41 |
| <b>ACCESSION NO.:</b>   | NP_003918.1  |
| <b>PROTEIN GI NO.:</b>  | 4505117  |

**OFFICIAL SYMBOL:** MBD2

**GENE ID:** 8932

### Background

**REFERENCES:** 1) Auriol E, Billard LM, Magdinier F, Dante R. Specific binding of the methyl binding domain protein 2 at the BRCA1-NBR2 locus. Nucleic Acids Res. 2005 Jul 28;33(13):4243-54. Print 2005.

**FOR RESEARCH USE ONLY**

December 13, 2016