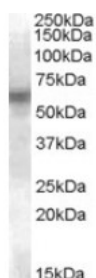




LYN Antibody

CATALOG NUMBER: 45-850



Western Blot (0.1ug/ml) staining of U937 lysate (35ug protein in RIPA buffer). Primary incubation was 1 hour. Detected by chemiluminescence.

Specifications

SPECIES REACTIVITY:	Human
TESTED APPLICATIONS:	ELISA, WB
APPLICATIONS:	ELISA: antibody detection limit dilution 1:16000. Western Blot: Approx 60kDa band observed in lysates of cell line U937 (calculated MW of 58.6kDa according to NP_002341.1). Recommended concentration: 0.1-0.3ug/ml.
POSITIVE CONTROL:	1) Cat. No. 1215 - U937 Whole Cell Lysate
IMMUNOGEN:	LYN antibody was raised against a 12 amino acid synthetic peptide near the internal region of LYN.
HOST SPECIES:	Goat

Properties

PURIFICATION:	LYN antibody was purified from goat serum by ammonium sulphate precipitation followed by antigen affinity chromatography using the immunizing peptide.
PHYSICAL STATE:	Liquid
BUFFER:	LYN antibody is supplied in Tris saline, 0.02% sodium azide, pH 7.3 with 0.5% bovine serum albumin.
CONCENTRATION:	500 ug/mL
STORAGE CONDITIONS:	Aliquot and store at -20°C. Minimize freezing and thawing.
CLONALITY:	Polyclonal
CONJUGATE:	Unconjugated

Additional Info

ALTERNATE NAMES:	LYN, v-yes-1 Yamaguchi sarcoma viral related oncogene homolog, FLJ26625, JTK8, Yamaguchi sarcoma viral (v-yes-1) related oncogene homolog
ACCESSION NO.:	NP_002341.1
PROTEIN GI NO.:	4505055
OFFICIAL SYMBOL:	LYN
GENE ID:	4067

Background

REFERENCES:

1) Okamoto M, Hayakawa F, Miyata Y, Watamoto K, Emi N, Abe A, Kiyoi H, Towatari M, Naoe T. Lyn is an important component of the signal transduction pathway specific to FLT3/ITD and can be a therapeutic target in the treatment of AML with FLT3/ITD. *Leukemia*. 2007 Mar;21(3):403-10. Epub 2007 Jan 18.

FOR RESEARCH USE ONLY

December 13, 2016