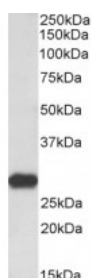




Latexin Antibody

CATALOG NUMBER: 45-825



Western blot (0.3 ug/ml) staining of Rat
Brain lysate (35 ug protein in RIPA buffer).
Primary incubation was 1 hour. Detected
by chemiluminescence.

Specifications

SPECIES REACTIVITY:	Human, Mouse, Rat
TESTED APPLICATIONS:	ELISA, IF, IHC-P, WB
APPLICATIONS:	ELISA: antibody detection limit dilution 1:128000. Western Blot: Approx 30kDa band observed in lysates of Human Brain (Cerebellum), Mouse Brain and Rat Brain (calculated MW of 25.8kDa according to NP_064554.2). Recommended concentration: 1-3ug/ml. Immunohistochemistry: This antibody has been successfully used in IHC-P for mouse bones as described in the following paper: Kadouchi et al, Biochem Biophys Res Commun. 2009 Jan 16;378(3):600-4; PMID: 19059214.
POSITIVE CONTROL:	1) Cat. No. 1463 - Rat Brain Tissue Lysate
IMMUNOGEN:	Latexin antibody was raised against a 15 amino acid synthetic peptide near the C-Terminus of Latexin.
HOST SPECIES:	Goat

Properties

PURIFICATION:	Latexin antibody was purified from goat serum by ammonium sulphate precipitation followed by antigen affinity chromatography using the immunizing peptide.
PHYSICAL STATE:	Liquid
BUFFER:	Latexin antibody is supplied in Tris saline, 0.02% sodium azide, pH 7.3 with 0.5% bovine serum albumin.
CONCENTRATION:	500 ug/mL
STORAGE CONDITIONS:	Aliquot and store at -20°C. Minimize freezing and thawing.
CLONALITY:	Polyclonal
CONJUGATE:	Unconjugated

Additional Info

ALTERNATE NAMES:	LXN, latexin, ECI, TCI, latexin protein
ACCESSION NO.:	NP_064554.2
PROTEIN GI NO.:	21359933
OFFICIAL SYMBOL:	LXN

GENE ID: 56925

Background

REFERENCES: 1) de Haan G. Latexin is a newly discovered regulator of hematopoietic stem cells. Nat Genet. 2007 Feb;39(2):141-2.

FOR RESEARCH USE ONLY

December 13, 2016