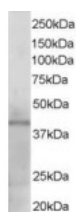




KLF3 Antibody

CATALOG NUMBER: 45-805



Western Blot staining (1ug/ml) of Human Heart lysate (RIPA buffer, 35ug total protein per lane). Primary incubated for 1 hour. Detected by western blot using chemiluminescence.

Specifications

SPECIES REACTIVITY:	Human
TESTED APPLICATIONS:	ELISA, WB
APPLICATIONS:	ELISA: antibody detection limit dilution 1:32000. Western Blot: Approx 40kDa band observed in Human Heart lysates (predicted MW of 40kDa according to NP_057615). Recommended for use at 1-3ug/ml. Please note that the 40kDa Band is sometimes accompanied by a 80-90kDa band of unknown identity.
POSITIVE CONTROL:	1) Cat. No. 1301 - Human Heart Tissue Lysate
IMMUNOGEN:	KLF3 antibody was raised against a 14 amino acid synthetic peptide near the N-Terminus of KLF3.
HOST SPECIES:	Goat

Properties

PURIFICATION:	KLF3 antibody was purified from goat serum by ammonium sulphate precipitation followed by antigen affinity chromatography using the immunizing peptide.
PHYSICAL STATE:	Liquid
BUFFER:	KLF3 antibody is supplied in Tris saline, 0.02% sodium azide, pH 7.3 with 0.5% bovine serum albumin.
CONCENTRATION:	500 ug/mL
STORAGE CONDITIONS:	Aliquot and store at -20°C. Minimize freezing and thawing.
CLONALITY:	Polyclonal
CONJUGATE:	Unconjugated

Additional Info

ALTERNATE NAMES:	KLF3, Kruppel-like factor 3 (basic), BKLF, basic kruppel like factor
ACCESSION NO.:	NP_057615
PROTEIN GI NO.:	156151371
OFFICIAL SYMBOL:	KLF3

GENE ID: 51274

Background

REFERENCES: 1) Turner J, Crossley M. Basic Kruppel-like factor functions within a network of interacting haematopoietic transcription factors. *Int J Biochem Cell Biol.* 1999 Oct;31(10):1169-74.

FOR RESEARCH USE ONLY

December 13, 2016