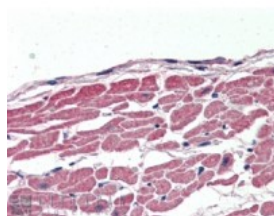




## KCC3 Antibody

CATALOG NUMBER: 45-793



Immunohistochemistry (2.5ug/ml) staining  
of paraffin embedded Human Heart.  
Steamed antigen retrieval with citrate  
buffer pH 6, AP-staining.

### Specifications

#### SPECIES REACTIVITY:

**TESTED APPLICATIONS:** IHC-P, WB

**APPLICATIONS:** ELISA: antibody detection limit dilution 1:16000. Western Blot: Approx 120kDa band observed in Human Heart and Kidney lysates (calculated MW ranging 121-128kDa according to NP\_598408.1; NP\_005126.1; NP\_001035959.1; NP\_001035960.1; NP\_001035961.1; NP\_001035962.1). Recommended concentration: 0.1-0.3ug/ml Immunohistochemistry: In paraffin embedded Human Heart shows staining of myocardial fibrils in transverse section. Recommended concentration, 2-4ug/ml.

**POSITIVE CONTROL:** 1) Cat. No. 1301 - Human Heart Tissue Lysate

**SPECIFICITY:** This antibody is expected to recognise all 6 reported isoforms (NP\_598408.1; NP\_005126.1; NP\_001035959.1; NP\_001035960.1; NP\_001035961.1; NP\_001035962.1; );

**IMMUNOGEN:** KCC3 antibody was raised against a 12 amino acid synthetic peptide near the internal region of KCC3.

**HOST SPECIES:** Goat

### Properties

**PURIFICATION:** KCC3 antibody was purified from goat serum by ammonium sulphate precipitation followed by antigen affinity chromatography using the immunizing peptide.

**PHYSICAL STATE:** Liquid

**BUFFER:** KCC3 antibody is supplied in Tris saline, 0.02% sodium azide, pH 7.3 with 0.5% bovine serum albumin.

**CONCENTRATION:** 500 ug/mL

**STORAGE CONDITIONS:** Aliquot and store at -20°C. Minimize freezing and thawing.

**CLONALITY:** Polyclonal

**CONJUGATE:** Unconjugated

### Additional Info

**ALTERNATE NAMES:** SLC12A6, solute carrier family 12 (potassium/chloride transporters), member 6, ACCPN, DKFZP434D2135, KCC3, KCC3A, KCC3B, agenesis of corpus callosum and peripheral neuropathy (Andermann syndrome),

potassium chloride cotransporter 3, potassium chloride c

ACCESSION NO.:	NP_001035959.1, NP_001035960.1, NP_001035961.1, NP_001035962.1, NP_005126.1, NP_598408.1
PROTEIN GI NO.:	110224452
OFFICIAL SYMBOL:	SLC12A6
GENE ID:	9990

#### Background

**REFERENCES:** 1) Simard CF, Bergeron MJ, Frenette-Cotton R, Carpentier GA, Pelchat ME, Caron L, Isenring P. Homooligomeric and heterooligomeric associations between K<sup>+</sup>-Cl<sup>-</sup> cotransporter isoforms and between K<sup>+</sup>-Cl<sup>-</sup> and Na<sup>+</sup>-K<sup>+</sup>-Cl<sup>-</sup> cotransporters. J Biol Chem. 2007 Jun 22;282(25):18083-93. Epub 2007 Apr 26.

FOR RESEARCH USE ONLY

December 13, 2016