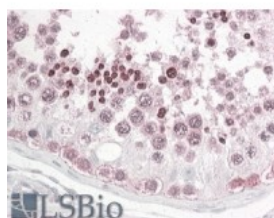




INADL Antibody

CATALOG NUMBER: 45-772



Immunohistochemistry (3.8ug/ml) staining
of paraffin embedded Human Testis.
Steamed antigen retrieval with citrate
buffer pH 6, AP-staining.

Specifications

SPECIES REACTIVITY:	Human
TESTED APPLICATIONS:	ELISA, IHC-P
APPLICATIONS:	ELISA: antibody detection limit dilution 1:32000. Western Blot: Preliminary experiments in Human Brain and Kidney lysates consistently showed a strong band at 100kDa followed by bands at ~55kDa, 45kDa and 40kDa at 1ug/ml. Please note that currently we cannot find an explanation in the literature for the Immunohistochemistry: In paraffin embedded Human Testis shows strong staining of spermatids. Recommended concentration, 3-6ug/ml.
IMMUNOGEN:	INADL antibody was raised against a 13 amino acid synthetic peptide near the N-Terminus of INADL.
HOST SPECIES:	Goat

Properties

PURIFICATION:	INADL antibody was purified from goat serum by ammonium sulphate precipitation followed by antigen affinity chromatography using the immunizing peptide.
PHYSICAL STATE:	Liquid
BUFFER:	INADL antibody is supplied in Tris saline, 0.02% sodium azide, pH 7.3 with 0.5% bovine serum albumin.
CONCENTRATION:	500 ug/mL
STORAGE CONDITIONS:	Aliquot and store at -20°C. Minimize freezing and thawing.
CLONALITY:	Polyclonal
CONJUGATE:	Unconjugated

Additional Info

ALTERNATE NAMES:	INADL, PATJ, PDZ domain protein (Drosophila inaD-like), protein associated to tight junctions
ACCESSION NO.:	NP_795352.2
PROTEIN GI NO.:	112382257
OFFICIAL SYMBOL:	INADL
GENE ID:	10207

Background

REFERENCES: 1) Philipp S, Flockerzi V. Molecular characterization of a novel human PDZ domain protein with homology to INAD from *Drosophila melanogaster*. FEBS Lett. 1997 Aug 18;413(2):243-8.

FOR RESEARCH USE ONLY

December 13, 2016