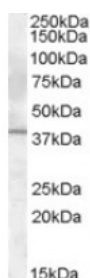




Il12 beta Antibody

CATALOG NUMBER: 45-766



Western Blot (1ug/ml) staining of Rat Liver lysate (35ug protein in RIPA buffer).
Primary incubation was 1 hour. Detected by chemiluminescence.

Specifications

SPECIES REACTIVITY:	Mouse, Rat
TESTED APPLICATIONS:	ELISA, WB
APPLICATIONS:	ELISA: antibody detection limit dilution 1:4000. Western Blot: Approx 37kDa band observed in Mouse Spleen and Rat Liver lysates (calculated MW of 38.2kDa according to Mouse NP_032378.1 and 38.4kDa according to Rat NP_072133.1). Recommended concentration: 1-3ug/ml.
POSITIVE CONTROL:	1) Cat. No. 1464 - Rat Liver Tissue Lysate
IMMUNOGEN:	Il12 beta antibody was raised against a 12 amino acid synthetic peptide near the internal region of Il12 beta.
HOST SPECIES:	Goat

Properties

PURIFICATION:	Il12 beta antibody was purified from goat serum by ammonium sulphate precipitation followed by antigen affinity chromatography using the immunizing peptide.
PHYSICAL STATE:	Liquid
BUFFER:	Il12 beta antibody is supplied in Tris saline, 0.02% sodium azide, pH 7.3 with 0.5% bovine serum albumin.
CONCENTRATION:	500 ug/mL
STORAGE CONDITIONS:	Aliquot and store at -20°C. Minimize freezing and thawing.
CLONALITY:	Polyclonal
CONJUGATE:	Unconjugated

Additional Info

ALTERNATE NAMES:	IL12B, interleukin 12B, RP23-388G23.1, Il-12b, Il-12p40, Il12p40, p40, IL-12 p40, IL-23 subunit p40
ACCESSION NO.:	NP_032378.1
PROTEIN GI NO.:	6680397
OFFICIAL SYMBOL:	Il12b
GENE ID:	16160 (mouse); 64546 (rat);

Background

REFERENCES: 1) Stäger S, Maroof A, Zubairi S, Sanos SL, Kopf M, Kaye PM. Distinct roles for IL-6 and IL-12p40 in mediating protection against *Leishmania donovani* and the expansion of IL-10+ CD4+ T cells. *Eur J Immunol.* 2006 Jul;36(7):1764-71.

FOR RESEARCH USE ONLY

December 13, 2016