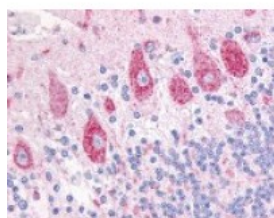




DUSP23 Antibody

CATALOG NUMBER: 48-306



Immunohistochemistry staining of DUSP23 in cerebellum tissue using DUSP23 Antibody.

Specifications

SPECIES REACTIVITY:	Bat, Bovine, Gorilla, Horse, Human, Monkey, Rat
TESTED APPLICATIONS:	ELISA, IHC
APPLICATIONS:	DUSP23 antibody can be used in ELISA, and immunohistochemistry starting at 34 ug/mL.
USER NOTE:	Optimal dilutions for each application to be determined by the researcher.
SPECIFICITY:	BLAST analysis of the peptide immunogen showed no homology with other human proteins.
IMMUNOGEN:	DUSP23 antibody was raised against a peptide located near the internal domain of DUSP23 (Human).
HOST SPECIES:	Rabbit

Properties

PURIFICATION:	Immunoaffinity Chromatography
PHYSICAL STATE:	Liquid
BUFFER:	PBS, 0.1% sodium azide.
STORAGE CONDITIONS:	DUSP23 antibody should be stored long term (months) at -80 °C and short term (days) at 4 °C. As with all antibodies avoid freeze/thaw cycles.
CLONALITY:	Polyclonal
CONJUGATE:	Unconjugated

Additional Info

ALTERNATE NAMES:	DUSP23, DUSP25, LDP3, LDP-3, RP11-190A12.1, MOSP, VH1-like phosphatase Z, VH2, VH1-like member Z
ACCESSION NO.:	Q9BVJ7
PROTEIN GI NO.:	73620828
OFFICIAL SYMBOL:	DUSP23
GENE ID:	54935

Background

BACKGROUND: Most of dual-specificity protein phosphatases (DSPs) play an important role in the regulation of mitogenic signal

transduction and controlling the cell cycle in response to extracellular stimuli. DUSP23 has been shown to dephosphorylate p44ERK1 but not p38 and p54SAPKbeta in vitro. Reverse transcription-PCR (RT-PCR) revealed that the DUSP23 was expressed in most fetal tissues and two adult tissues: testis and colon.

FOR RESEARCH USE ONLY

December 13, 2016