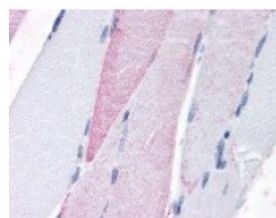




## GPRC6A Antibody

CATALOG NUMBER: 48-164



Immunohistochemistry staining of  
GPRC6A in skeletal muscle tissue using  
GPRC6A Antibody.

### Specifications

<b>SPECIES REACTIVITY:</b>	Gorilla, Human
<b>TESTED APPLICATIONS:</b>	IHC
<b>APPLICATIONS:</b>	GPRC6A antibody can be used in Western Blot starting at 0.5 - 2 ug/mL, and immunohistochemistry starting at 10 ug/mL.
<b>USER NOTE:</b>	Optimal dilutions for each application to be determined by the researcher.
<b>SPECIFICITY:</b>	BLAST analysis of the peptide immunogen showed no homology with other human proteins.
<b>IMMUNOGEN:</b>	GPRC6A antibody was raised against a peptide located in the N-Terminal extracellular domain of GPRC6A (Human).
<b>HOST SPECIES:</b>	Rabbit

### Properties

<b>PURIFICATION:</b>	Immunoaffinity Chromatography
<b>PHYSICAL STATE:</b>	Liquid
<b>BUFFER:</b>	PBS, 0.1% sodium azide.
<b>STORAGE CONDITIONS:</b>	GPRC6A antibody should be stored long term (months) at -80 °C and short term (days) at 4 °C. As with all antibodies avoid freeze/thaw cycles.
<b>CLONALITY:</b>	Polyclonal
<b>CONJUGATE:</b>	Unconjugated

### Additional Info

<b>ALTERNATE NAMES:</b>	GPRC6A, BA86F4.3, HGPCR33, HGPRC6A, Predicted with SOSUI analysis
<b>ACCESSION NO.:</b>	Q5T6X5
<b>PROTEIN GI NO.:</b>	74745292
<b>OFFICIAL SYMBOL:</b>	GPRC6A
<b>GENE ID:</b>	222545

## Background

**BACKGROUND:** GPRC6A has been shown to bind to L-alpha-amino acids. Recently GPRC6A has been suggested to be a calcium-sensing receptor (Pi et al. 2005).

---

**FOR RESEARCH USE ONLY**

December 13, 2016