

**Name: Rabbit polyclonal DRP-2 (Ab-514) antibody**  
**Product Data Sheet - ANTIBODY****Catalog: TA313767**

<b>Components:</b>	• Rabbit polyclonal DRP-2 (Ab-514) antibody (TA313767)
<b>Amount:</b>	100ul
<b>Immunogen:</b>	The antiserum was produced against synthesized non-phosphopeptide derived from human DRP-2 around the phosphorylation site of threonine 514 (T-V-TP-P-A).
<b>Host:</b>	Rabbit
<b>Isotype:</b>	IgG
<b>Species Reactivity:</b>	Human, Mouse, Rat
<b>Guaranteed Applications:</b>	WB, IHC, IF
<b>Suggested Dilutions:</b>	WB: 1:500~1:3000, IHC: 1:50~1:100, IF: 1:100~1:500, ELISA: 1:1000
<b>Concentration:</b>	1mg/ml
<b>Buffer:</b>	Phosphate buffered saline (without Mg <sup>2+</sup> and Ca <sup>2+</sup> ), pH 7.4, 150mM NaCl, 0.02% sodium azide and 50% glycerol.
<b>Purification:</b>	The antibody was affinity-purified from rabbit antiserum by affinity-chromatography using epitope-specific immunogen.
<b>Storage Condition:</b>	Shipped at -20C. Upon delivery store at -20C. Dilute in PBS (pH7.3) if necessary. Stable for 12 months from date of receipt. Avoid repeated freeze-thaws.

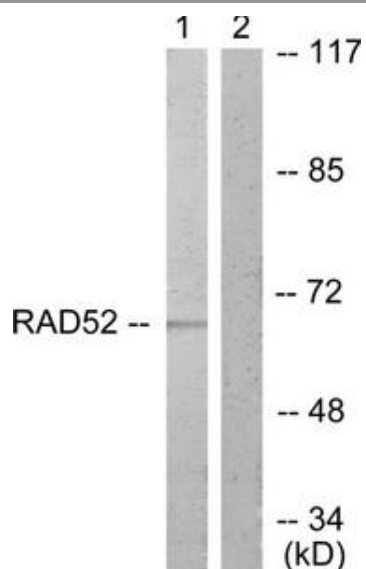
## Target

<b>Target Name:</b>	Homo sapiens dihydropyrimidinase-like 2 (DPYSL2), transcript variant 1
<b>Alternative Name:</b>	CRMP-2; CRMP2; DHPRP2; DRP-2; DRP2; N2A3; ULIP-2; ULIP2
<b>Database Link:</b>	NP_001184222
<b>Function:</b>	

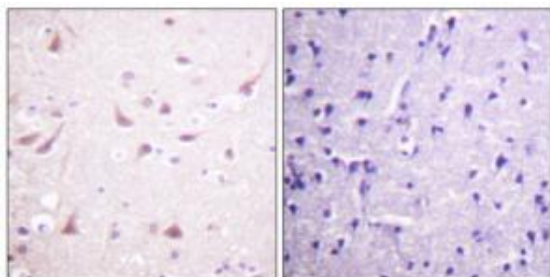
***This product is to be used for laboratory only. Not for diagnostic or therapeutic use.***

© 2014 OriGene Technologies, Inc. 9620 Medical Center Dr., Suite 200, Rockville, MD 20850

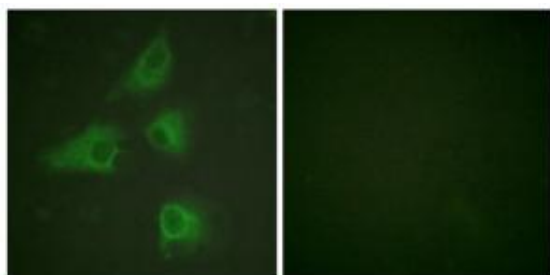
## Validation Data



Western blot analysis of extracts from A549 cells, treated with EGF (200ng/ml, 30mins), using DRP-2 (Ab-514) antibody. The lane on the right is treated with the synthesized peptide.



Immunohistochemistry analysis of paraffin-embedded human brain tissue using DRP-2 (Ab-514) antibody. The picture on the right is treated with the synthesized peptide.



Immunofluorescence analysis of HeLa cells, using DRP-2 (Ab-514) antibody. The picture on the right is treated with the synthesized peptide.

\* More validation images may be available on our website: <http://www.origene.com/antibody/TA313767.aspx>

***This product is to be used for laboratory only. Not for diagnostic or therapeutic use.***

© 2014 OriGene Technologies, Inc. 9620 Medical Center Dr., Suite 200, Rockville, MD 20850