

Name: Rabbit polyclonal CK-1a (Tyr294) antibody(Phospho-specific)
Product Data Sheet - PHOSPHO**Catalog: TA313699**

Components:	• Rabbit polyclonal CK-1a (Tyr294) antibody(Phospho-specific) (TA313699)
Amount:	100ul
Immunogen:	The antiserum was produced against synthesized phosphopeptide derived from human CK-1a around the phosphorylation site of tyrosine 294 (Y-D-YP-T-F).
Host:	Rabbit
Isotype:	IgG
Species Reactivity:	Human, Mouse, Rat
Guaranteed Applications:	WB, IHC
Suggested Dilutions:	WB: 1:500~1:3000, IHC: 1:50~1:100, ELISA: 1:10000
Concentration:	1mg/ml
Buffer:	Phosphate buffered saline (without Mg ²⁺ and Ca ²⁺), pH 7.4, 150mM NaCl, 0.02% sodium azide and 50% glycerol.
Purification:	The antibody was affinity-purified from rabbit antiserum by affinity-chromatography using epitope-specific immunogen.
Storage Condition:	Shipped at -20C. Upon delivery store at -20C. Dilute in PBS (pH7.3) if necessary. Stable for 12 months from date of receipt. Avoid repeated freeze-thaws.

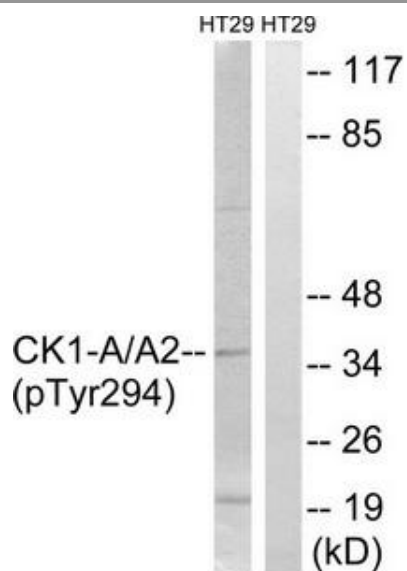
Target

Target Name:	Homo sapiens casein kinase 1, alpha 1 (CSNK1A1), transcript variant 2
Alternative Name:	CK1; CK1a; CK1a; HEL-S-77p; HLCDGP1; PRO2975
Database Link:	NP_001883
Function:	

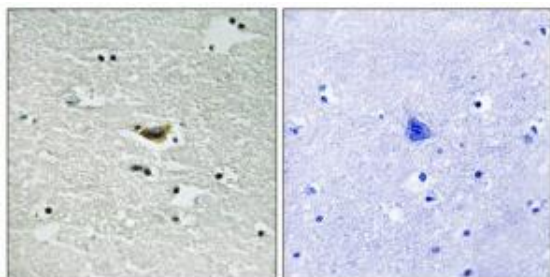
This product is to be used for laboratory only. Not for diagnostic or therapeutic use.

© 2014 OriGene Technologies, Inc. 9620 Medical Center Dr., Suite 200, Rockville, MD 20850

Validation Data



Western blot analysis of extracts from HT-29 cells, treated with heat shock, using CK-1a (Phospho-Tyr294) antibody. The lane on the right is treated with the synthesized peptide.



Immunohistochemistry analysis of paraffin-embedded human brain tissue using CK-1a (Phospho-Tyr294) antibody. The picture on the right is treated with the synthesized peptide.

* More validation images may be available on our website: <http://www.origene.com/antibody/TA313699.aspx>

This product is to be used for laboratory only. Not for diagnostic or therapeutic use.

© 2014 OriGene Technologies, Inc. 9620 Medical Center Dr., Suite 200, Rockville, MD 20850