

Name: Rabbit polyclonal anti-CPM antibody
Product Data Sheet - ANTIBODY**Catalog: TA313680**

Components:	<ul style="list-style-type: none">• Rabbit polyclonal anti-CPM antibody (TA313680)• 1 vial of 20ug myc-DDK tagged CPM HEK293T over-expression lysate lyophilized in RIPA buffer (LC423611). (Reconstitute into 20ul of 1x SDS sample buffer before loading; load 5ul per lane as WB control or as desired)
Amount:	100ul
Immunogen:	The antiserum was produced against synthesized peptide derived from internal of human CPM. Purification: The antibody was affinity-purified from rabbit antiserum by affinity-chromatography using
Host:	Rabbit
Isotype:	IgG
Species Reactivity:	Human
Guaranteed Applications:	WB
Suggested Dilutions:	WB: 1:500~1:3000, ELISA: 1:40000
Concentration:	1mg/ml
Buffer:	Phosphate buffered saline (without Mg ²⁺ and Ca ²⁺), pH 7.4, 150mM NaCl, 0.02% sodium azide and 50% glycerol.
Purification:	The antibody was affinity-purified from rabbit antiserum by affinity-chromatography using epitope-specific immunogen.
Storage Condition:	Shipped at -20C. Upon delivery store at -20C. Dilute in PBS (pH7.3) if necessary. Stable for 12 months from date of receipt. Avoid repeated freeze-thaws.

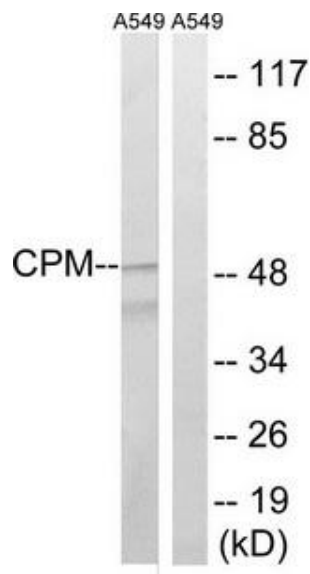
Target

Target Name:	Homo sapiens carboxypeptidase M (CPM), transcript variant 3
Alternative Name:	carboxypeptidase M
Database Link:	NP_001005502
Function:	

This product is to be used for laboratory only. Not for diagnostic or therapeutic use.

© 2014 OriGene Technologies, Inc. 9620 Medical Center Dr., Suite 200, Rockville, MD 20850

Validation Data



Western blot analysis of extracts from A549 cells, using CPM antibody. The lane on the right is treated with the synthesized peptide.

* More validation images may be available on our website: <http://www.origene.com/antibody/TA313680.aspx>